

Black River Watershed Project

From 2002 to 2005, the Van Buren Conservation District oversaw the planning process for the Black River Watershed Project, resulting in the creation of the Black River Watershed Management Plan.

In the spring of 2006, the Conservation District received a three-year grant from the Michigan Department of Environmental Quality to continue the project and work to implement the Watershed Management Plan.



The Black River Watershed encompasses approximately 287 square miles in Allegan and Van Buren Counties. The Black River flows into Lake Michigan in South Haven. Primary water quality concerns in the watershed are erosion and sedimentation, nutrient loading, and development issues.



This Nonpoint Source Pollution Control project has been funded in part through the Michigan Nonpoint Source Program by the United States Environmental Protection Agency under assistance agreement C9975474-05 to the Van Buren Conservation District for the Black River Watershed project. The contents of this document do not necessarily reflect the views and policies of the EPA, nor does the mention of trade names or commercial products constitute endorsement or recommendation for use.

"Water is the most critical resource issue of our lifetime and our children's lifetime. The health of our waters is the principal measure of how we live on the land."

-Luna Leopold

For more information, contact:

Erin Fuller
Black River Watershed Coordinator
1035 E. Michigan Ave.
Paw Paw, MI 49079
Phone: (269) 657-4030 x 5
Fax: (269) 657-4926
erin.fuller@mi.nacdnet.net

www.vbco.org/blackriver_2.asp

All programs and services are provided on a nondiscriminatory basis.



Black River Watershed Project

**Implementation Phase
April 2006—March 2009**



Van Buren Conservation District

What is a watershed?

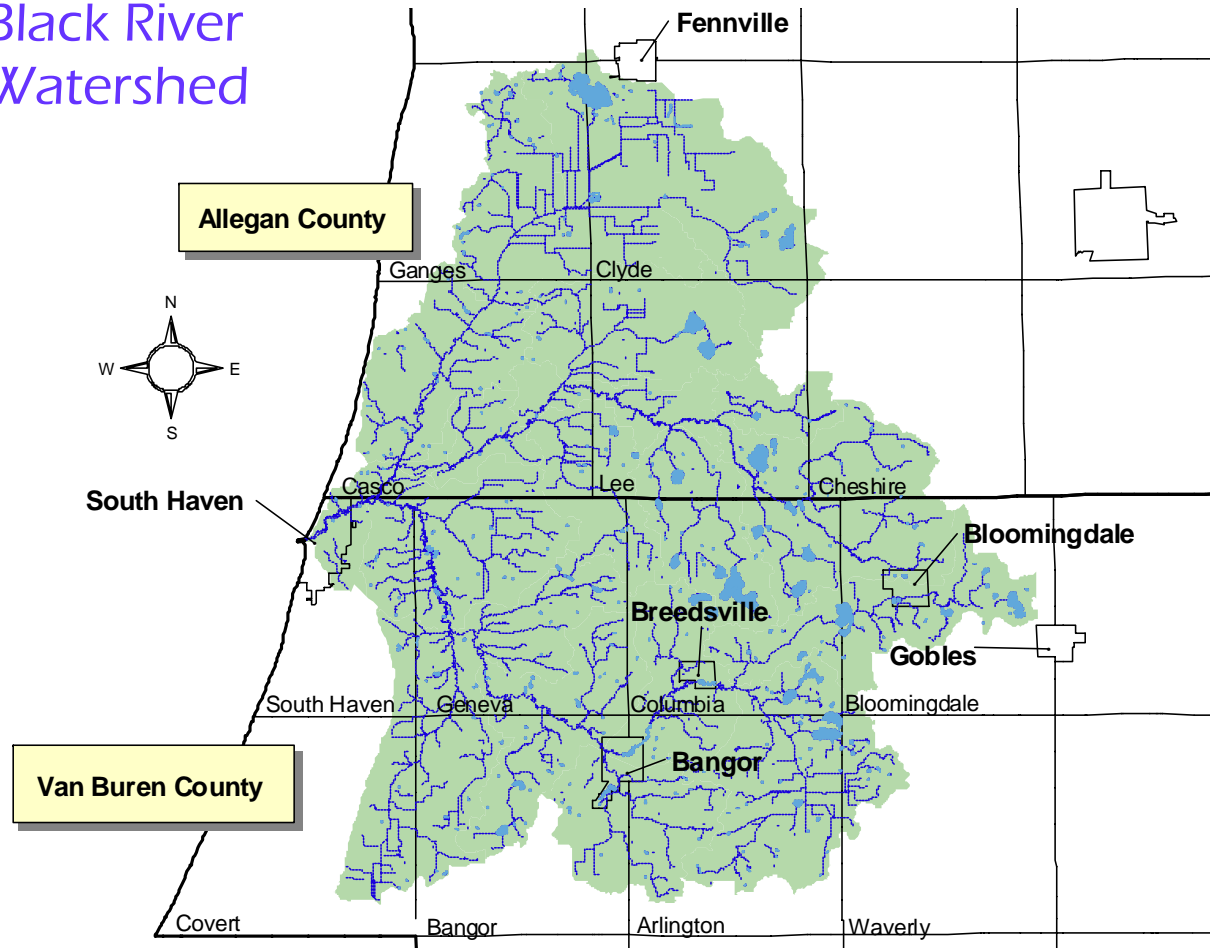
A watershed is all the land area that drains to a river or lake. All of the streams in the Black River Watershed flow to the Black River, and eventually into Lake Michigan at South Haven.



Our watershed is important because we rely on its water for drinking, recreation, industry and tourism. What you do makes a difference in keeping it clean!



Black River Watershed



Activities in this phase of the project will include:

- ✘ Reduce runoff and restore/stabilize eroding streambanks
- ✘ Work with communities to reduce polluted stormwater
- ✘ Identify and improve failing septic systems
- ✘ Promote agricultural residue management practices
- ✘ Perform a master plan/zoning ordinance review
- ✘ Develop targeted outreach campaign promoting land protection
- ✘ Support efforts to protect prime farmland from development
- ✘ Hold educational watershed workshop series

